

Appendix 2

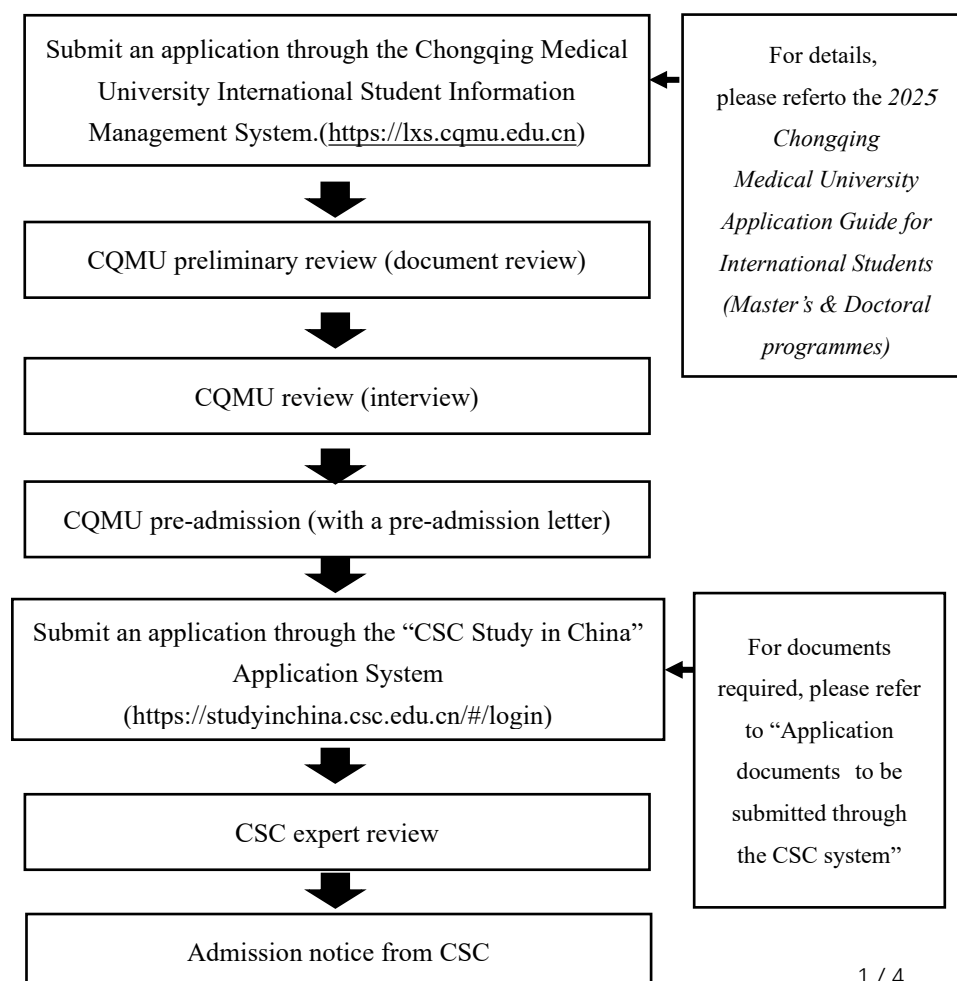
Application Guide for 2025 Chongqing Medical University Chinese Government Scholarship High Level Postgraduate Programme

I. About the programme

The Chinese Government Scholarship—High-level Graduate Programme (formerly the Chinese Government Scholarship—University Graduate Programme) was established in 2014, aiming to attract high-level students from around the world to pursue their master’s and doctoral degrees in China, thus promoting the alignment of Chinese colleges and universities to international standards under China’s Double First-Class Initiative. As a fully funded scholarship, the programme covers tuition fee, accommodation fee, insurance premiums and living expenses.

International students with good academic performance and professional competency as well as great development potential are selected through expert review on a competitive basis from among those who submit an application and are recommended by colleges/universities. The result of the expert review of China Scholarship Council (CSC) will prevail.

II. Programme application process





Official admission to CQMU (with a formal admission letter)

Notes: Documents uploaded through the system must be clear, authentic and valid. Applicants are advised to scan the documents using professional equipment, and are responsible for any consequences resulting from unclear or unidentifiable documents.

III. Basic requirements

Applicants check the website (www.campuschina.org) for information about all programmes, application procedures, and Chinese universities.

CQMU Recommended quota in 2025: 50 people

Application Deadline: 17:00 pm, March 10, 2025 (GMT+8)

IV. Application requirements

1. Refer to the *2025 Chongqing Medical University Application Guide for International Students (Master's & Doctoral programmes)*

V. Application documents to be submitted through the CSC system

1. *Chinese Government Scholarship Application Form* (in Chinese or English);
2. Passport (a photocopy/scan). **At the time of registration, the passport must be valid for not less than 6 months. Otherwise, please renew it on time;**
3. Notarized highest diploma. Prospective diploma winners must submit the pre-graduation certificate or the schooling certificate issued by their current universities;
4. Academic transcripts (from the undergraduate programme onwards). Copies of academic records from first to last semester during the undergraduate, graduate (if any), and doctoral programmes (if any) shall be provided. These transcripts shall be issued and sealed by the attending university's academic affairs office, graduate school, or student management department. Those documents should be in Chinese or English. If not, these documents should be attached with notarized English translations;
5. Language qualification certificates. Applicants for Chinese-taught programmes must submit valid HSK reports in accordance with the corresponding Chinese proficiency requirements. Applicants for English-taught programmes shall provide relevant language proficiency certificates, like IELTS or TOFEL report as required by CQMU;
6. Pre-admission documents;
7. A study plan. A study plan written in Chinese or English shall contain more than 1,000 characters or words; the proposal of a doctoral student shall be signed by the applicant's Chinese supervisor;
8. Letters of recommendation. Two letters of recommendation (in Chinese or English only) from professors or associate professors should be submitted. These letters shall describe the applicant's objectives of learning in China, comprehensive abilities, and evaluation of future

growth, as well as the cooperation between the supervisors or the exchange between universities both in China and abroad;

9. Personal portfolio. To apply for majors related to art or design, applicants could submit their own works through “Portfolio/Other Supporting Documents” in the system. Applicants could also submit such materials in other ways as requested by the applied colleges/universities;
10. Applicants under the age of 18 must submit the valid documents of their legal guardian who stays in China.
11. A copy of the *Foreigner Physical Examination Form* completed in English (the original copy shall be kept by the applicant). The form is designed by the Frontier Health and Quarantine authorities of China. The physical examinations must cover all the items listed in the *Foreigner Physical Examination Form*. Incomplete records or those without the photo or sealed photo of the applicants, the signature of the attending physician, or the official stamp of the hospital are invalid. The physical examination result is valid for only 6 months.
12. A non-criminal record. **Applicants must provide a non-criminal record officially issued by the local public security with a validity period of at least 6 months.**

Notes: Documents uploaded through the system must be clear, authentic and valid. Applicants are advised to scan the documents with proper sanners, and will take the responsibility for any consequence resulting from unclear or unidentifiable documents.

VI. Instructions for Chinese Government Scholarship Information System (CGSIS)

Please read the following procedures carefully before proceeding with your scholarship application.

Step 1: Register

Visit the “CSC Study in China website and click “Scholarship Application for Students” at <http://www.campuschina.org>. Register an account through [CREAT AN ACCOUNT] and log in with your account.

Step 2: Input Personal Details

Click “Edit Personal Details” and finish inputting personal details by filling in all the information, verifying and saving the information. After the completion of this section, return to the previous page by clicking “Finish” and start filling in your application information.

Step 3: Select the correct “Programme Category”

Please select Programme Category “Type B”, click “New Application”, and start filling in the application information.

Step 4: Input the correct “Agency Number (provided by the preferred designated university)”

CQMU’s Agency Number is: 10631

Programme Category and Agency Number are directly matched; both are mandatory for

online application.

After inputting the agency number, the matched agency name will automatically show on the page. As **Programme Category** and **Agency Number** are directly matched, application processing authorities will not receive your online application if the programme category or agency number is not correct.

Step 5: Input Application Information

Move on to the section of “Language Proficiency and Study Plan” and upload “Supporting Documents” as requested, then click “Submit” to complete the application. Check each part of your application carefully before submission. Please make sure that all the information and uploaded documents are valid and accurate.

Each applicant can only submit one Type B application every academic year. Applicants should confirm one university as Type B application if their interested universities are more than one. The submitted Type B application will be considered as the final selected university.

Step 6: Once submitted, amendments cannot be made on “Personal Details” and “Application Information”.

Before the application is processed by the processing authorities, applicants can revoke the submitted application by clicking “Withdraw” and edit the application. After revoking the application, applicants must submit it again after re-editing, or the application will not be processed. Once the application is processed, the application cannot be revoked.

Step 7: Click “Print the Application Form” and download the form

Step 8: Submit scholarship application under the requirements of the dispatching authorities (or application processing agency)

Universities offering scholarship shall not entrust any individual or intermediary agent to process Chinese Government Scholarship applications. Applicants shall access relevant information at the official website of the China Scholarship Council (<http://www.campuschina.org/>).

Notes:

Applicants are advised to use Mozilla Firefox or Internet Explorer 11. To use Internet Explorer, please disable “Compatibility View Mode” first. Applicants must provide all application information in Chinese or English.